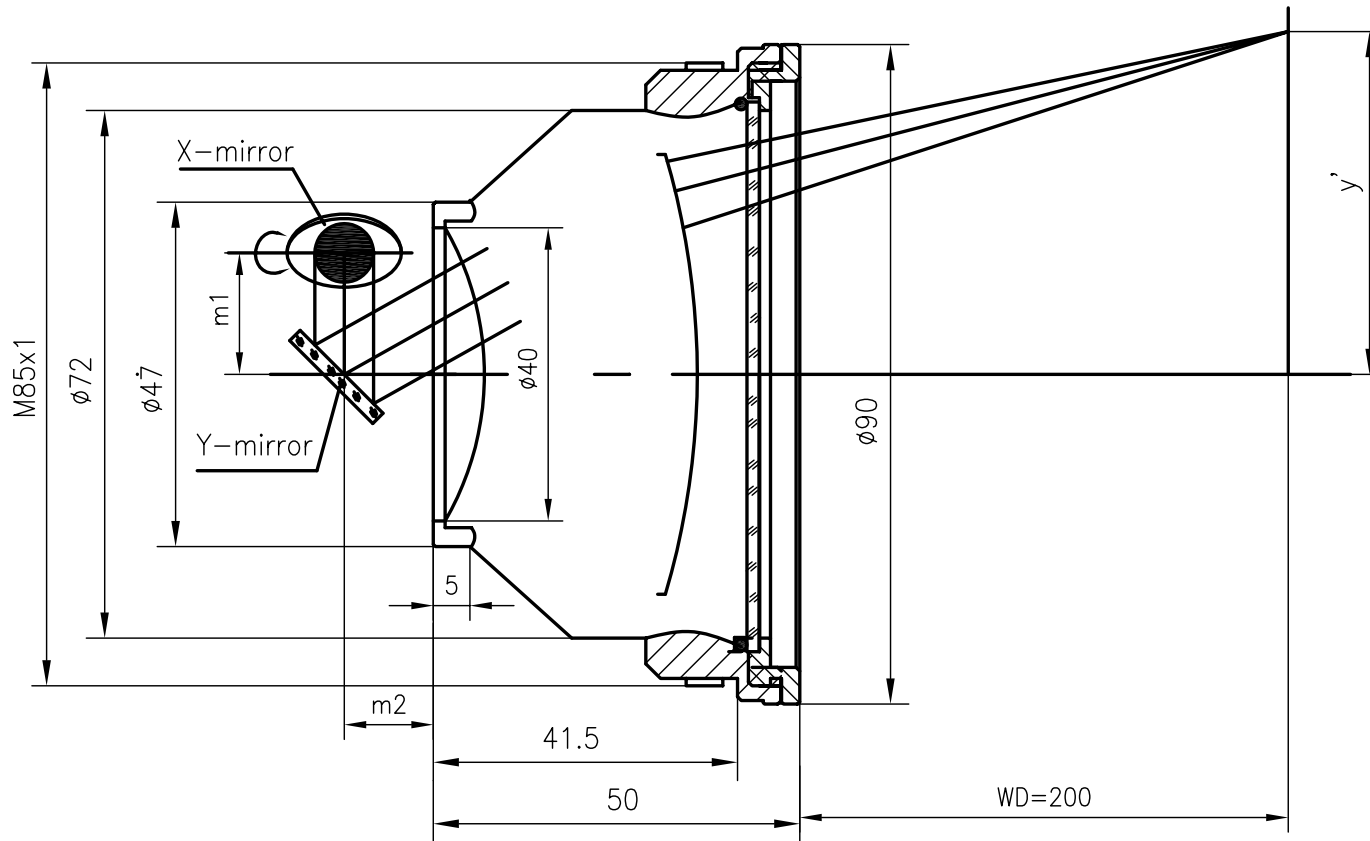


F-Theta f=210mm

Drawing No. SH-355-140-210-8



Specification

EFL	210mm
WD	252mm
Wavelength	$\lambda = 355\text{nm}$
scan angle	$\pm 25^\circ$
max scan field	140mm x 140mm
Entrance beam diameter ϕ	8mm
Center point diameter ($1/e^2$)	17 μm
Edge point diameter ($1/e^2$)	18 μm
mirror distance m1	16-20
mirror distance m2	10-12
Transmission >	96%
Thread	M85x1
With protective window	yes