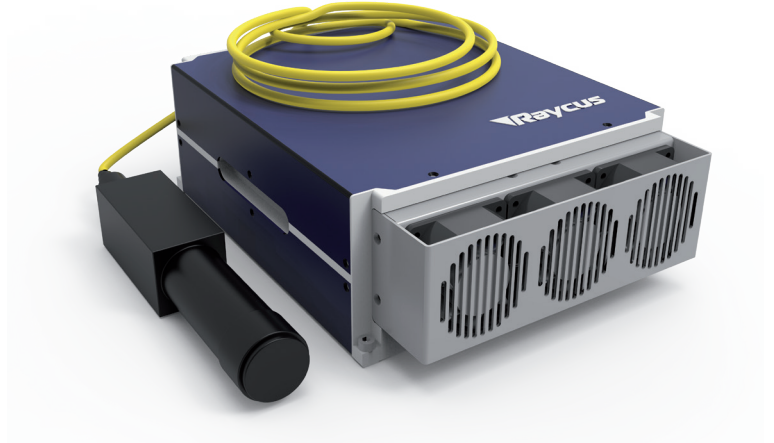


## MOPA FASER LASER

- MOPA Technology
- Large Frequency Range
- Short pulse setup
- Optimized optical quality
- Pulse width modifiable
- CW Function



### SPECIFICATION

| Product Name               | RFL-P20MX            | RFL-P30MX            | RFL-P60MX            | RFL-P70MX            | RFL-P100MX           | RFL-P200MX           | RFL-P250MX           |
|----------------------------|----------------------|----------------------|----------------------|----------------------|----------------------|----------------------|----------------------|
| Output Power               | 20 W                 | 30 W                 | 60 W                 | 70 W                 | 100 W                | 200 W                | 250 W                |
| Wavelength                 | 1064 nm              | 1064 nm              | 1064 nm              | 1064 nm              | 1064 nm              | 1064 nm              | 1064 nm              |
| Repetition Frequency Range | 1-2000 kHz           | 1-2000 kHz           | 1-2000 kHz           | 1-2000 kHz           | 1-2000 kHz           | 1-4000 kHz           | 1-4000 kHz           |
| Output Power Stability     | < 3 %                | < 3 %                | < 3 %                | < 3 %                | < 3 %                | < 5 %                | < 5 %                |
| Output Beam Diameter       | 7±1 mm               | 7±1 mm               | 6.5±1 mm             | 6.5±1 mm             | 6.5±1 mm             | 7±1 mm               | 7±1 mm               |
| Beam Quality               | M <sup>2</sup> < 1,3 | M <sup>2</sup> < 1,6 | M <sup>2</sup> < 1,6 | M <sup>2</sup> < 1,6 | M <sup>2</sup> < 1,6 | M <sup>2</sup> < 1,6 | M <sup>2</sup> < 1,8 |
| Polarizatio State          | Random               | Random               | Random               | Random               | Random               | Random               | Random               |
| Pulse Width                | 2-500 ns             | 2-500 ns             | 10-350 ns            | 10-350 ns            | 10-350 ns            | 10-350 ns            | 10-350 ns            |
| Single Pulse Energy        | 0,7 mJ               | 1 mJ                 | 1.5 mJ               | 1.5 mJ               | 1.5 mJ               | 1.5 mJ               | 1.5 mJ               |
| Delivery Cable Length*     | 3 m                  | 3 m                  | 3 m                  | 3 m                  | 3 m                  | 3 m                  | 3 m                  |
| Power Supply               | 24 V                 | 24 V                 | 24 V                 | 24 V                 | 24 V                 | 48 V                 | 48 V                 |
| Range of Power             | 1-100 %              | 1-100 %              | 1-100 %              | 1-100 %              | 1-100 %              | 1-100 %              | 1-100 %              |
| Power Consumption          | 150 W                | 200 W                | 450 W                | 450 W                | 500 W                | 800 W                | 1000 W               |
| Dimensions(mm)             | 286x215x95           | 286x215x95           | 360x390x123          | 360x390x123          | 360x390x123          | 395x460x130          | 460x395x131          |
| Cooling                    | Air                  | Air                  | Air                  | Air                  | Air                  | Air                  | Air                  |
| Operating Temperature      | 0 – 40 °C            | 0 – 40 °C            | 0 – 40 °C            | 0 – 40 °C            | 0 – 40 °C            | 0 – 40 °C            | 0 – 40 °C            |

\* optional 2 / 4 / 5 m