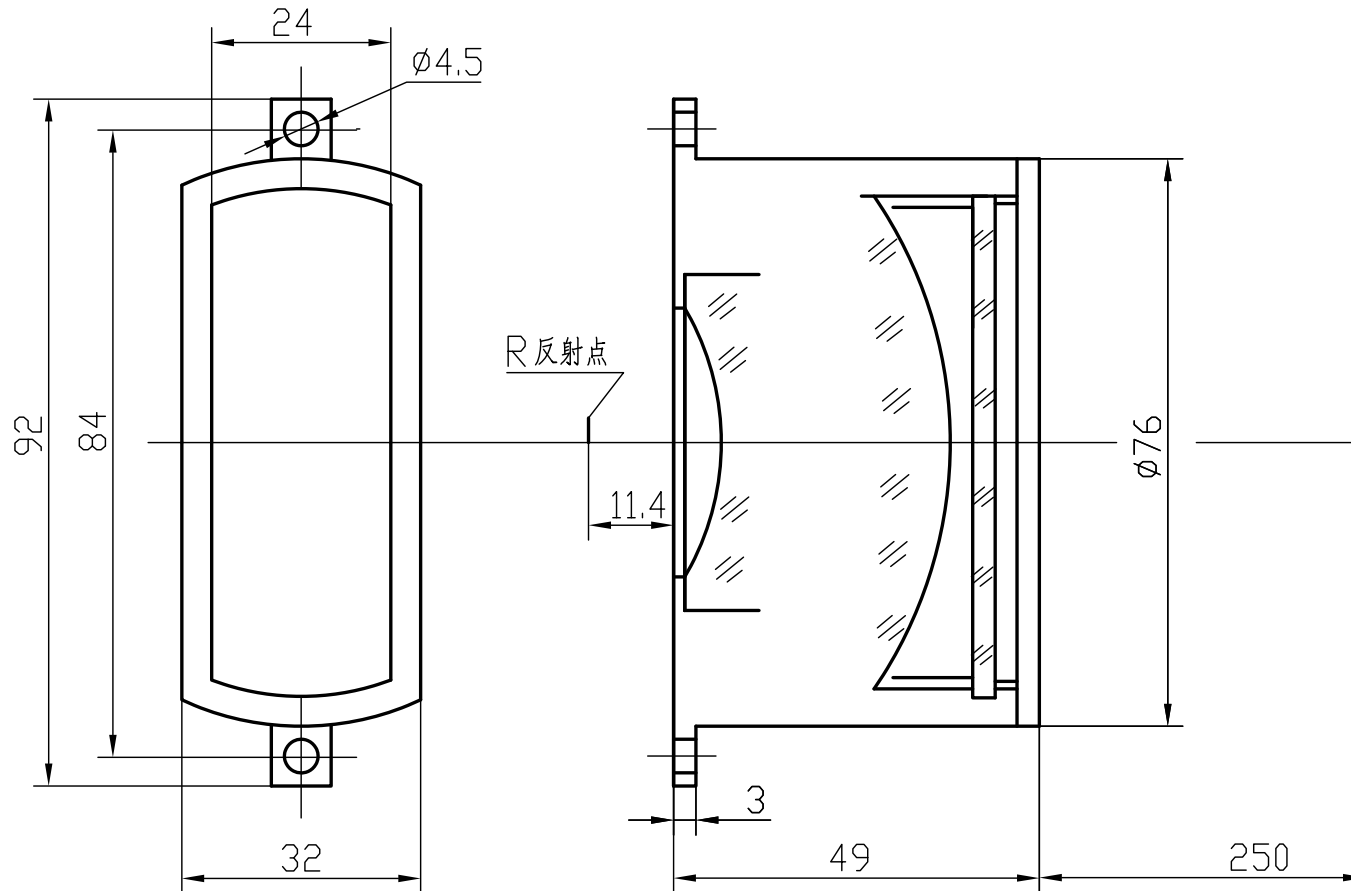


F-Theta f=210mm D20mm for clean

Drawing No. SH-CL-1064-200-210-20-FS



Specification

EFL	210mm
S	250mm
Wavelength	$\lambda = 1064\text{nm}$
scan angle	$\pm 28^\circ$
max scan length	200mm
Entrance beam diameter ϕ	20mm
Center point diameter ($1/e^2$)	30 μm
Edge point diameter ($1/e^2$)	31 μm
mirror distance m1	
mirror distance m2	16-20
Transmission >	97%
Thread	
With protective window	yes