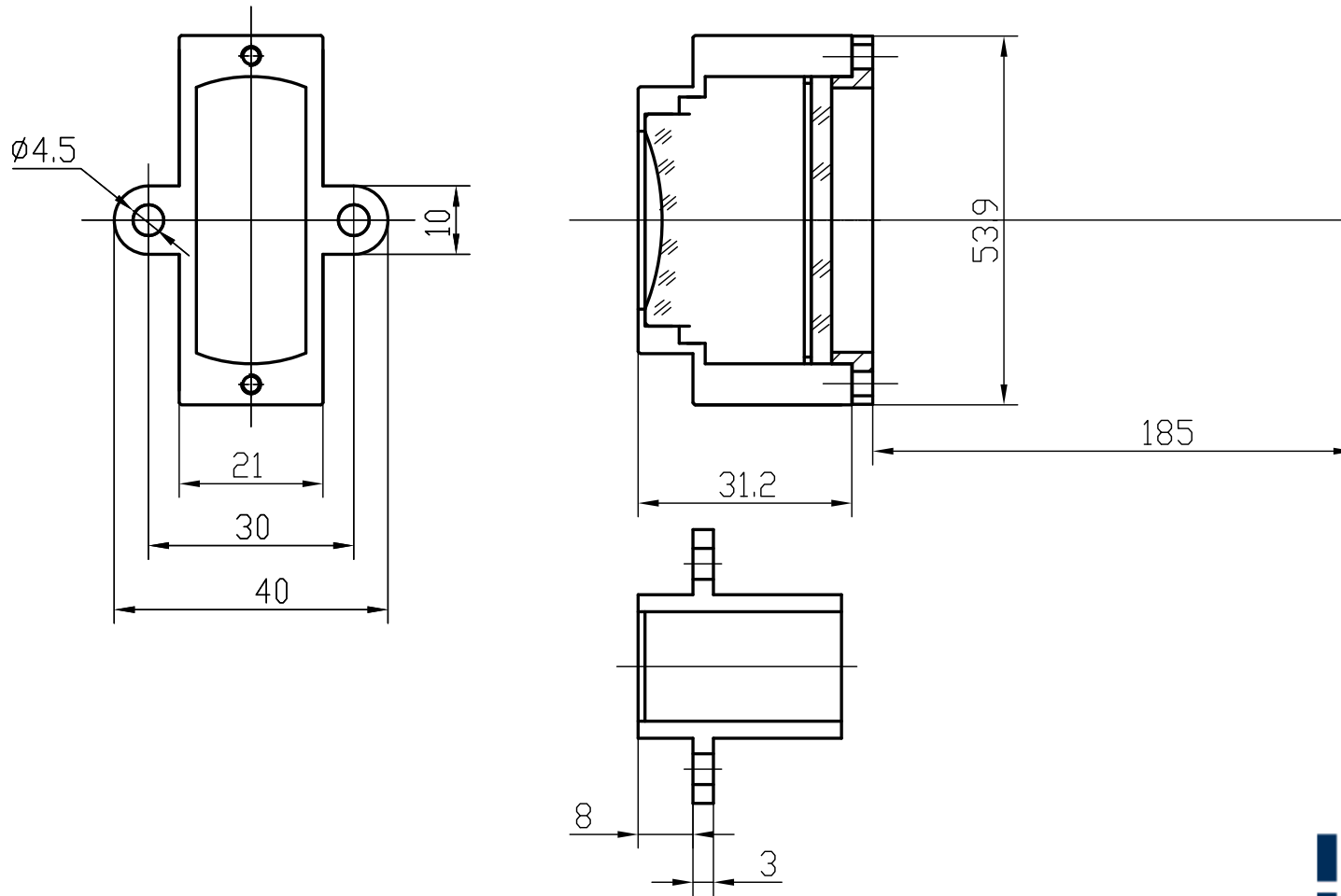


F-Theta f=160mm D10mm for clean

Drawing No. SH-CL-1064-100-160-10-FS



Specification

EFL	160mm
S	185mm
Wavelength	$\lambda = 1064\text{nm}$
scan angle	$\pm 27^\circ$
max scan length	100mm
Entrance beam diameter ϕ	10mm
Center point diameter ($1/e^2$)	31 μm
Edge point diameter ($1/e^2$)	33 μm
mirror distance m1	
mirror distance m2	10-12
Transmission >	97%
Thread	
With protective window	yes