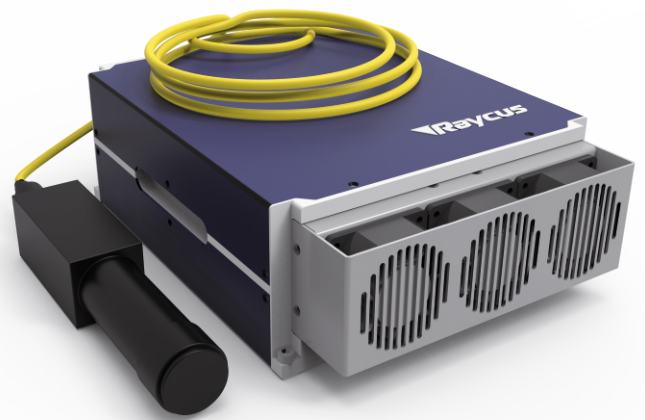


RFL-P300MX

MOPA FIBER LASER
Data sheet V 1.0

Features

- » High stable laser output
- » MOPA Technology
- » Short pulse setup
- » Very competitive price
- » Pulse width modifiable



TECHNICAL SPECIFICATIONS

Central wavelength	1060-1080 nm	Spectral width @350ns	<10nm
Output power	300 W	Delivery cable	¹⁾ 3 m
Max. pulse energy	1.5 mJ	Supply voltage DC	48 VDC
Range of power	0-100 %	Current consumption	<17 A
Repetition frequency	1-4000 kHz	Operating temperature	0 - 40 °C
Pulse width	<10-350 ns	Storage temperature	-10 - 60 °C
Power instability	<5 %	Colling method	Air
Beam diameter	6-8 mm	Laser dimension(mm)	460x131x395
Beam quality	<1.8 M ²	Net weight	< 16kg
Laser switching ON/OFF time	<100/30 μs		

¹⁾ optional 2/5 m

RFL-P300MX

Pulse width corresponds to the power reduction frequency point and the maximum single pulse energy

Pulse width (ns)	Power reduction frequency (kHz)	Upper frequency limit (kHz)	Max. single pulse energy (mJ)
10	4000	4000	0.05
20	2000	3000	0.1
30	1140	3000	0.26
60	600	2000	0.5
100	300	1000	1
200	260	1000	1.16
250	230	900	1.3
350	200	600	1.50
CW	--	--	CW

