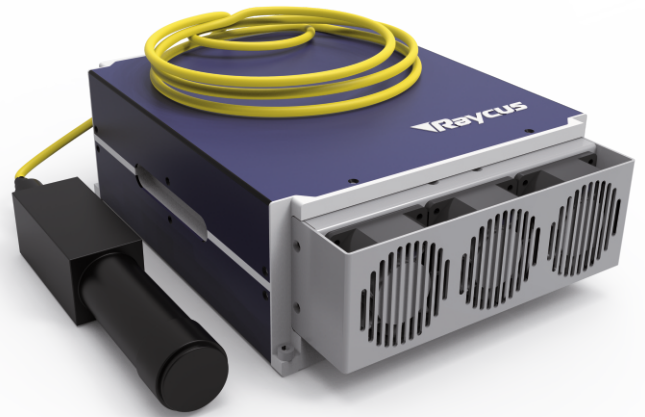


RFL-P250MX

MOPA FIBER LASER
Data sheet V 1.0

Features

- » High stable laser output
- » MOPA Technology
- » Short pulse setup
- » Very competitive price
- » Pulse width modifiable



TECHNICAL SPECIFICATIONS

Central Wavelength	1060-1080 nm
Output power	250 W
Max. pulse energy	1.5 mJ
Range of power	0-100 %
Repetition frequency	1-4000 kHz
Pulse width	<10-350 ns
Power instability	<5 %
Beam diameter	6-8 mm
Beam quality	<1.6 M ²
Laser switching ON/OFF time	<20/2 μs

Spectral width @350ns	<10nm
Delivery cable	¹⁾ 3 m
Supply voltage DC	48 VDC
Current consumption	<17 A
Operating temperature	0 - 40 °C
Storage temperature	-10 - 60 °C
Cooling method	Air
Laser dimension(mm)	460x480x130
Net weight	< 16kg

¹⁾ optional 2/5 m

RFL-P250MX

Pulse width corresponds to the power reduction frequency point and the maximum single pulse energy

Pulse width (ns)	Power reduction frequency (kHz)	Upper frequency limit (kHz)	Max. single pulse energy (mJ)
10	3800	4000	0.06
20	1560	3000	0.16
30	1140	3000	0.22
60	500	2000	0.50
100	250	1000	1.00
200	215	1000	1.16
250	190	900	1.31
350	165	600	1.51
CW	--	--	CW

