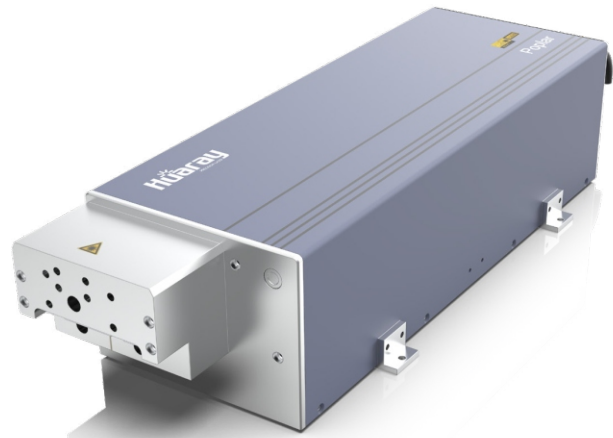


Poplar-355-3

Nanosecond DPSS-Laser
Data sheet V 1.0

Features

- » New design, decreased dimensions
- » High stability & durability
- » Short pulse width
- » Wide application field
- » Air cooled



TECHNICAL SPECIFICATIONS

Central wavelength	355 nm	Beam circularity	>90%
Output power	3 W @ 50 kHz	Pulse stability	<3% RMS
Max. pulse energy	-	Power stability	<3% RMS
Burst energy	-	Power supply	AC 220/110V
Repetition frequency	20 kHz - 200 kHz	Operating temperature	10 - 35 °C
Pulse width	<10 ns @ 50 kHz	Storage temperature	-10 - 60 °C
Beam divergence	<1 mrad	Cooling method	Water
Beam diameter	4 mm	Laser dimension(mm)	538x131x207
Beam quality	<1.2 M ²	Net weight	< 20 kg
Polarization state	Linear		

Poplar-355-3

