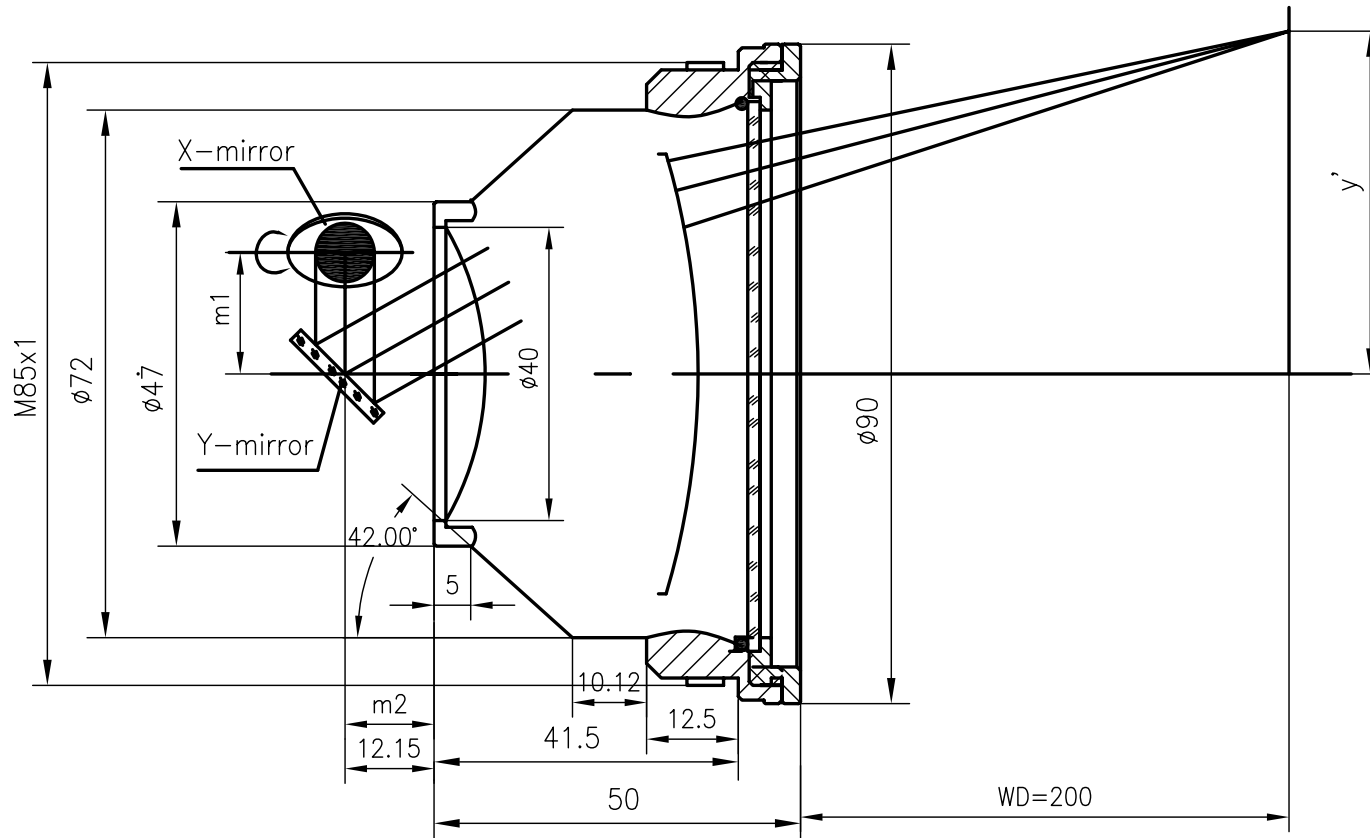


# F-Theta f=330mm

## Drawing No. SH-355-220-330-8



### Specification

EFL	330mm
WD	355mm
Wavelength	$\lambda = 355\text{nm}$
scan angle	$\pm 25^\circ$
max scan field	220mm x 220mm
Entrance beam diameter $\varnothing$	8mm
Center point diameter ( $1/e^2$ )	27 $\mu\text{m}$
Edge point diameter ( $1/e^2$ )	32 $\mu\text{m}$
mirror distance m1	16-20
mirror distance m2	10-12
Transmission >	97%
Thread	M85x1
With protective window	yes