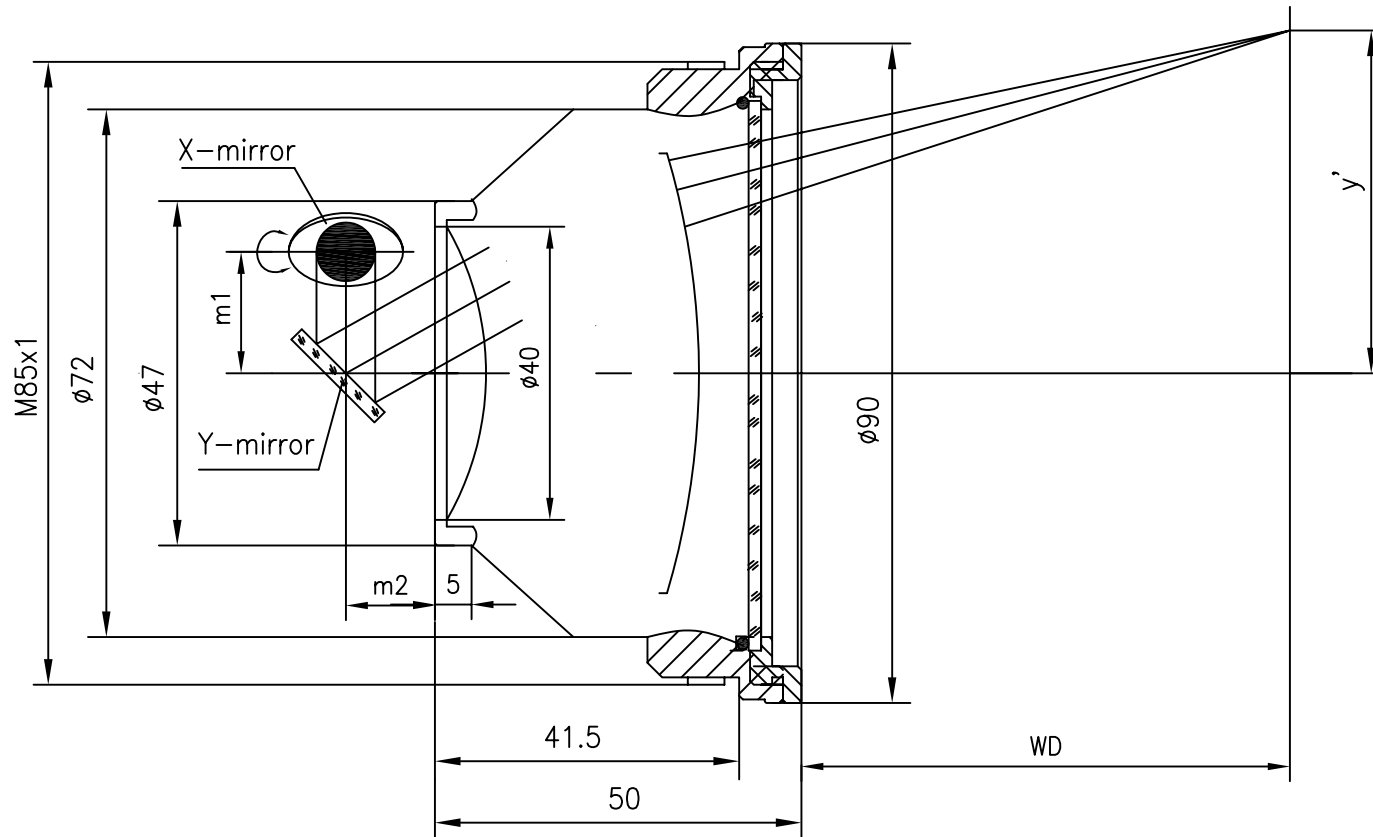


# F-Theta f=500mm

## Drawing No. SH-532-350-500-12



### Specification

EFL	500mm
WD	539mm
Wavelength	$\lambda = 532\text{nm}$
scan angle	$\pm 28^\circ$
max scan field	350mm x 350mm
Entrance beam diameter $\varnothing$	12mm
Center point diameter ( $1/e^2$ )	41 $\mu\text{m}$
Edge point diameter ( $1/e^2$ )	43 $\mu\text{m}$
mirror distance m1	16-20
mirror distance m2	10-12
Transmission >	97%
Thread	M85x1
With protective window	yes