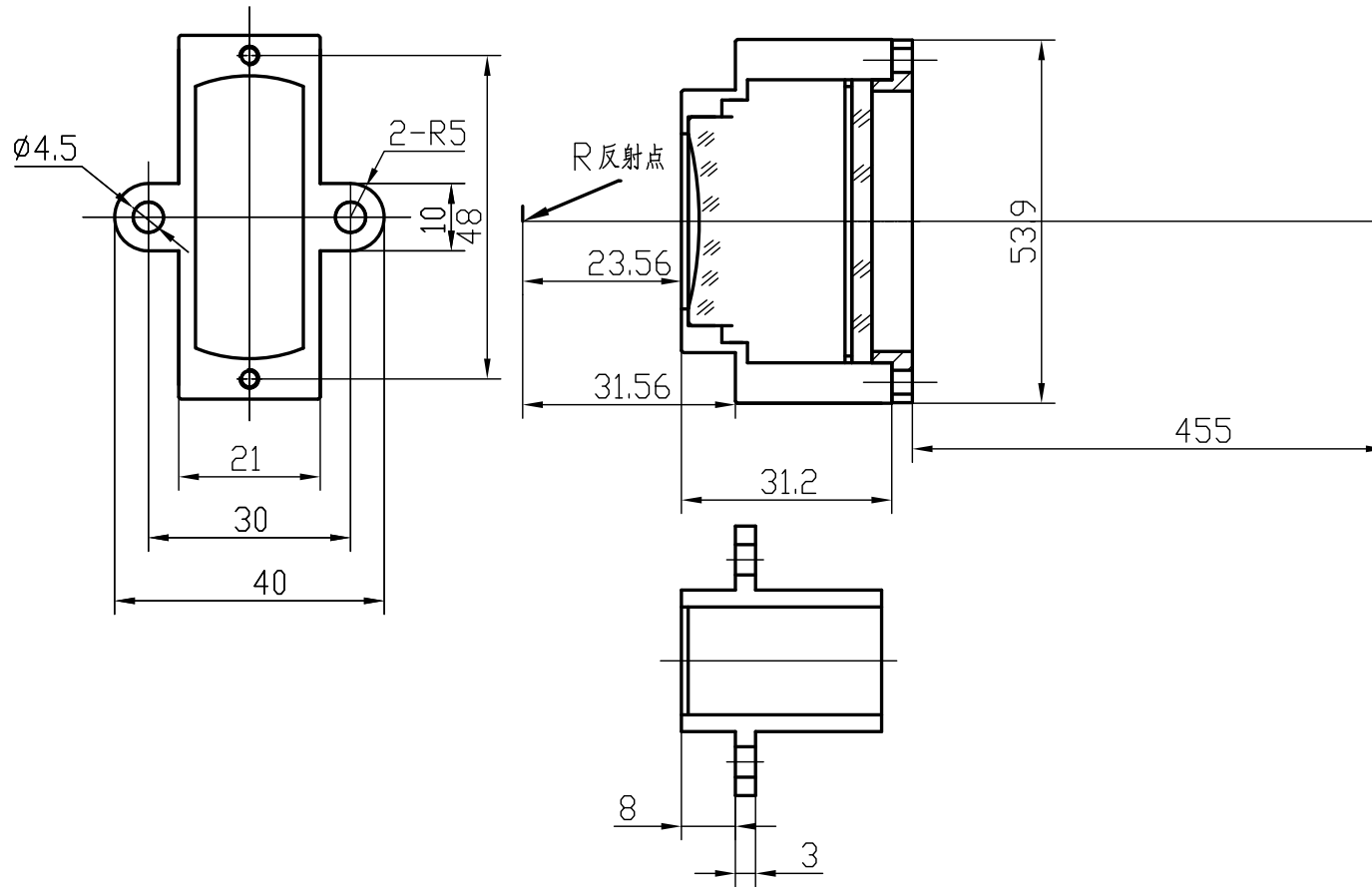


F-Theta f=420mm D10mm for clean

Drawing No. SH-CL-1064-300-420-10-FS



Specification

EFL	420mm
S	455mm
Wavelength	$\lambda = 1064\text{nm}$
scan angle	$\pm 27^\circ$
max scan length	300mm
Entrance beam diameter ϕ	10mm
Center point diameter ($1/e^2$)	51 μm
Edge point diameter ($1/e^2$)	53 μm
mirror distance m1	
mirror distance m2	10-12
Transmission >	97%
Thread	
With protective window	yes